

APPLICATIONS INCLUDE

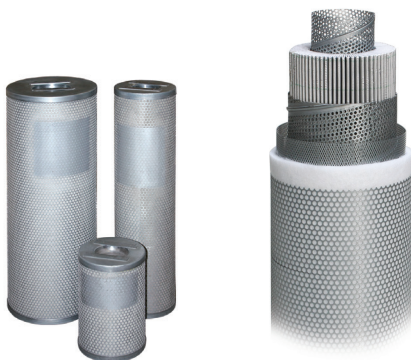
- Capturing oil fog, mist, or smoke from exhaust and Pressure unloading vents on oil flooded compressors, vacuum pumps and blowers
- Any application requiring Low Delta P coalescing of large air volumes
- Vacuum Freeze Drying
- Vacuum Out - Gasing
- Vacuum Coating
- Food Processing
- Nailers / Staplers
- Industrial Vacuum Processes
- Cement & Paper Processing

DESIGN

- Mist Eliminators are designed to meet the demand for:
- Efficient removal of oil-mist carryover from piston or oil flooded rotary compressors
- Long service life
- Strength to withstand strenuous operating conditions
- Protection from oil slugs or compressor Air/ Oil separator failure

FEATURES

- Very Low Pressure drop
- Large oil catching efficiency
- Easy field cleaning
- Positive sealing O-rings



- Temperature (continuous) 4 °C min. 80 °C max.
- Auto Float Drain is Standard
- Multiple drain Style Options Available
- Pressure Rating of 14 barg
- Removal of particles down to 0.01 micron including coalesced liquid water and oil providing a maximum remaining oil aerosol content of 0.01 ppm
- Increased surface area in a given volume allows low velocity separation of ultra fine oil mist
- Elements are grounded to canister minimizing static electricity problems

MIST ELIMINATOR ELEMENT

- Ultra low Pressure drop reduces energy costs.
- Positive gasket seals eliminate media bypass
- Filter change out differential 170 mbar
- True Air / Oil Separator
- Long service life

ELM Series

Mist Eliminator Compressed Air Filters

DALGAKIRAN

TECHNICAL DATA

MODEL	Capacity		Connection Size	Drain Port Size	Maximum Working Pressure	Maximum Working Temperature	Element Model	Housing Dimensions (mm)							
	m ³ /min	cfm						A	B	C	D	ØE	ØE	G	H
ELM 150	4,25	150	DN50	G 1/2"	16	80	14	500	1003	209	459	203	103	305	330
ELM 300	8,50	300	DN50	G 1/2"	16	80	14	500	1105	209	559	203	103	407	435
ELM 600	17,0	600	DN50	G 1/2"	16	80	14	500	1461	209	916	203	103	762	790
ELM 800	22,7	800	DN80	G 1/2"	16	80	14	500	1655	279	1084	203	103	915	950
ELM 1200	34,0	1200	DN80	G 1/2"	16	80	14	600	1520	281	931	254	103	762	790
ELM 1600	45,3	1600	DN80	G 1/2"	16	80	14	600	1671	281	1086	254	103	915	950
ELM 2100	59,5	2100	DN100	G 1/2"	16	80	14	700	1575	335	953	300	129	762	790
ELM 2750	77,9	2752	DN100	G 1/2"	16	80	14	700	1726	335	1100	300	129	915	950
ELM 4200	119,0	4200	DN150	G 1/2"	16	80	14	800	1670	393	983	365	181	762	790
ELM 6000	170,0	6000	DN150	G 1/2"	16	80	14	800	1925	393	1258	365	181	950	1045
ELM 8000	226,7	8000	DN200	G 1/2"	16	80	14	850	2020	417	1277	386	233	1016	1045
ELM 10000	283,3	10000	DN250	G 1/2"	16	80	14	1000	2118	417	1307	407	337	1016	1045
ELM 12000	340,0	12752	DN300	G 1/2"	16	80	14	1000	2688	497	1847	437	337	1524	1550

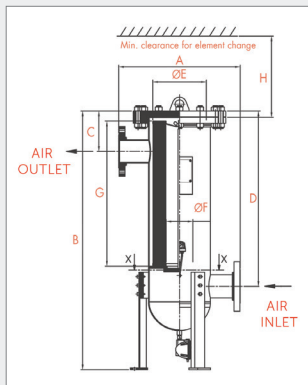
- DALGAKIRAN reserves its rights to change the specifications without any prior notice.

CORRECTION FACTORS FOR ELM COMPRESSED AIR FILTER

Operating Pressure (bar)	1	3	5	7	9	11	13	14
PSIG	15	44	73	100	131	160	189	200
Correction Factor	0,5	0,71	0,87	1	1,12	1,22	1,32	1,38

ELM Mist Eliminator Sizing Example;
If a compressor delivers 200 m³/min at 13 bar please choose your Filter model as follow:

200 m³/min / 1,32=151,5 m³/min your model is ELM 6000.



DRAIN TYPE

Electro-adjustable

External float type

Zero-loss drain

Manual